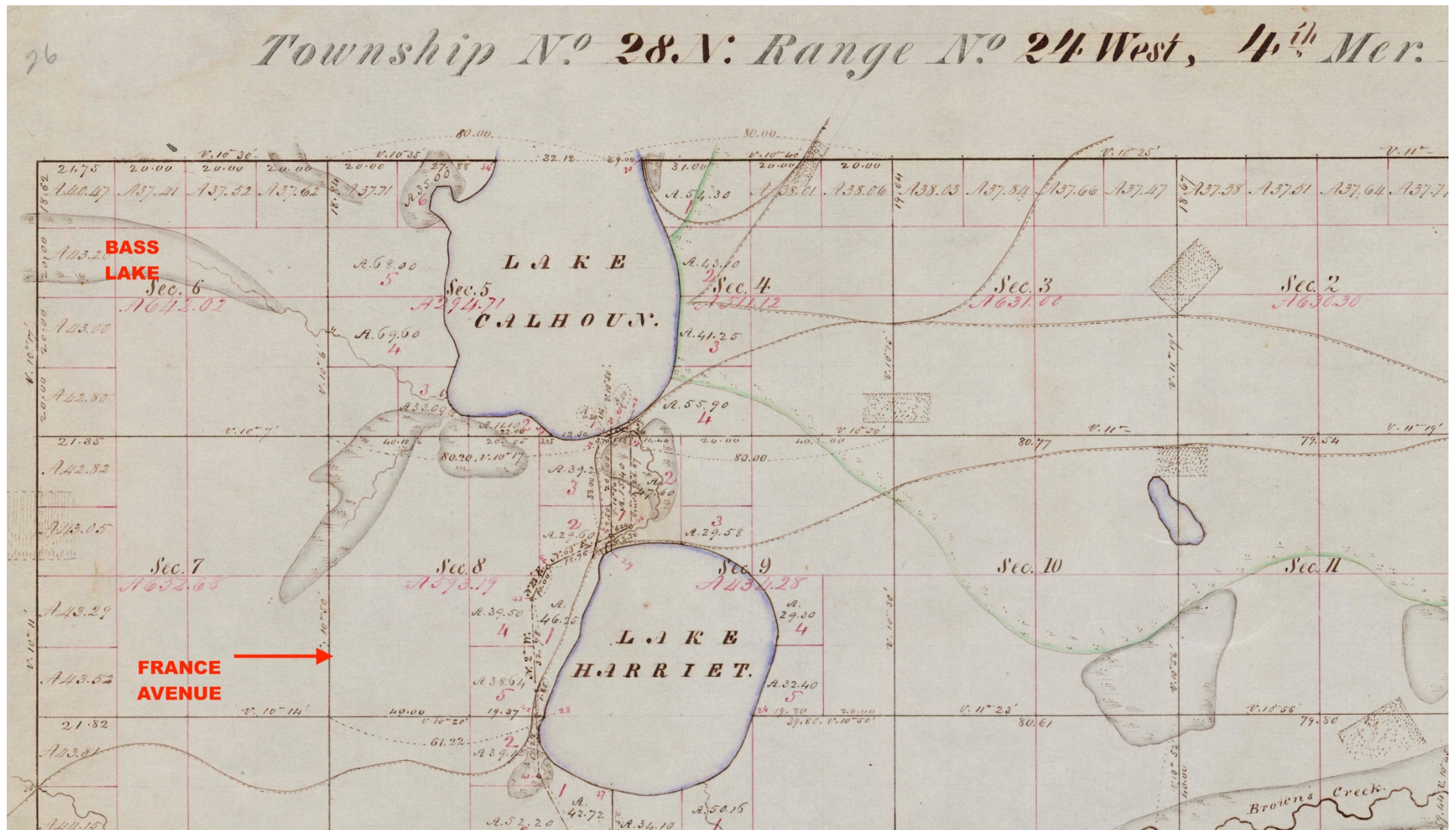


# *BASS LAKE RESEARCH PROJECT*



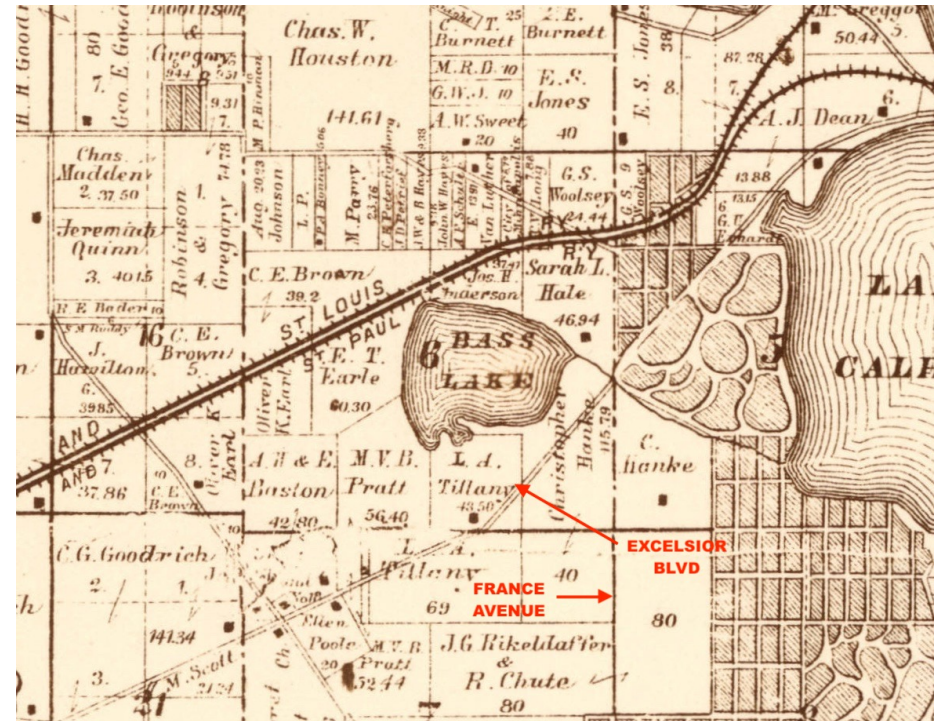
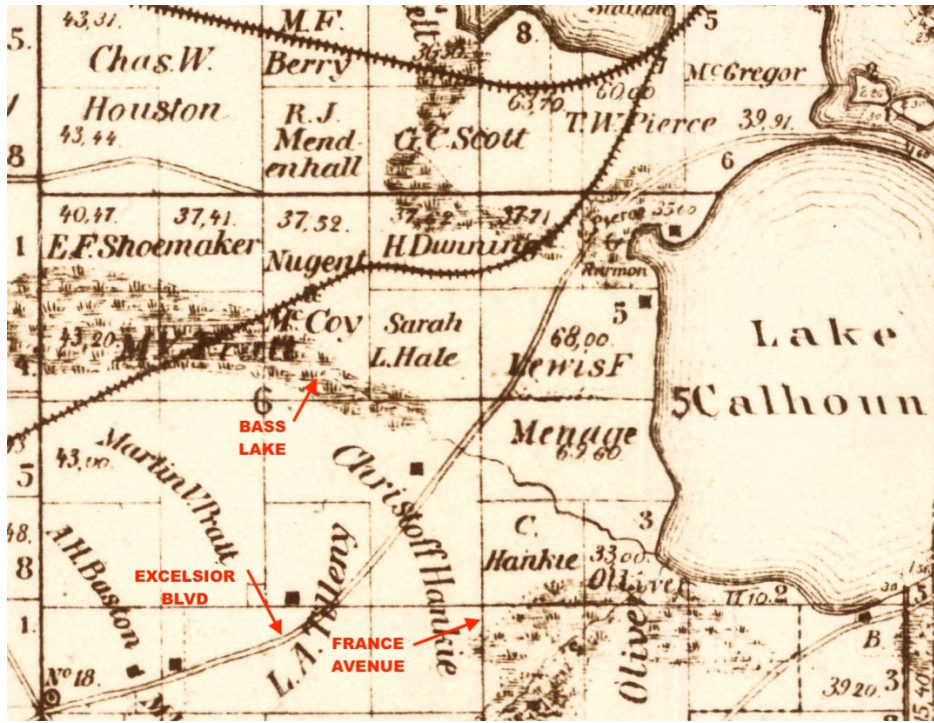
WE HAD A RECENT REQUEST TO LOOK MORE DEEPLY INTO THE HISTORY OF BASS LAKE. OUR PRESENTATION TODAY WILL GIVE YOU AN IDEA OF THE MANY STORIES THAT GET UNCOVERED WHEN YOU GO LOOKING INTO HISTORY....THE FEDERAL PREEMPTION ACT OF 1841 ALLOWED SQUATTERS TO SETTLE UP TO 160 ACRES OF THE UNSURVEYED LANDS IF THEY OCCUPIED AND WORKED TO IMPROVE THE PROPERTY...SECTIONS 8 AND 9 OF THE ACT GRANTED 500,000 ACRES OF LAND TO EACH INCLUDED STATE AND PROVIDED THAT THE PROCEEDS FROM THE SALES OF SUCH LANDS "SHALL BE FAITHFULLY APPLIED TO...ROADS, RAILWAYS, BRIDGES, CANALS AND IMPROVEMENT OF WATER-COURSES, **AND DRAINING OF SWAMPS.**"





FIRST RECORDED SURVEY OF ST. LOUIS PARK, BY DUBUQUE OFFICE OF U.S. SURVEYOR GENERAL – FILED ON FEBRUARY 27, 1857. BASS LAKE APPEARS TO BE SWAMPLAND FEEDING A CREEK THAT DRAINS INTO LAKE CALHOUN. LAND WAS PURCHASED FROM THE DAKOTA PEOPLE IN 1851. EXCELSIOR BLVD IS NOT SHOWN, BUT PROBABLY EXISTED AS A NATIVE PATH; THE VILLAGE OF EXCELSIOR WAS INCORPORATED IN 1853, AND THERE HAD TO BE A ROAD CONNECTING IT TO MINNEAPOLIS. THESE HI-DEF ORIGINAL MAPS HAVE BEEN SCANNED BY THE STATE AND ARE AVAILABLE ONLINE.



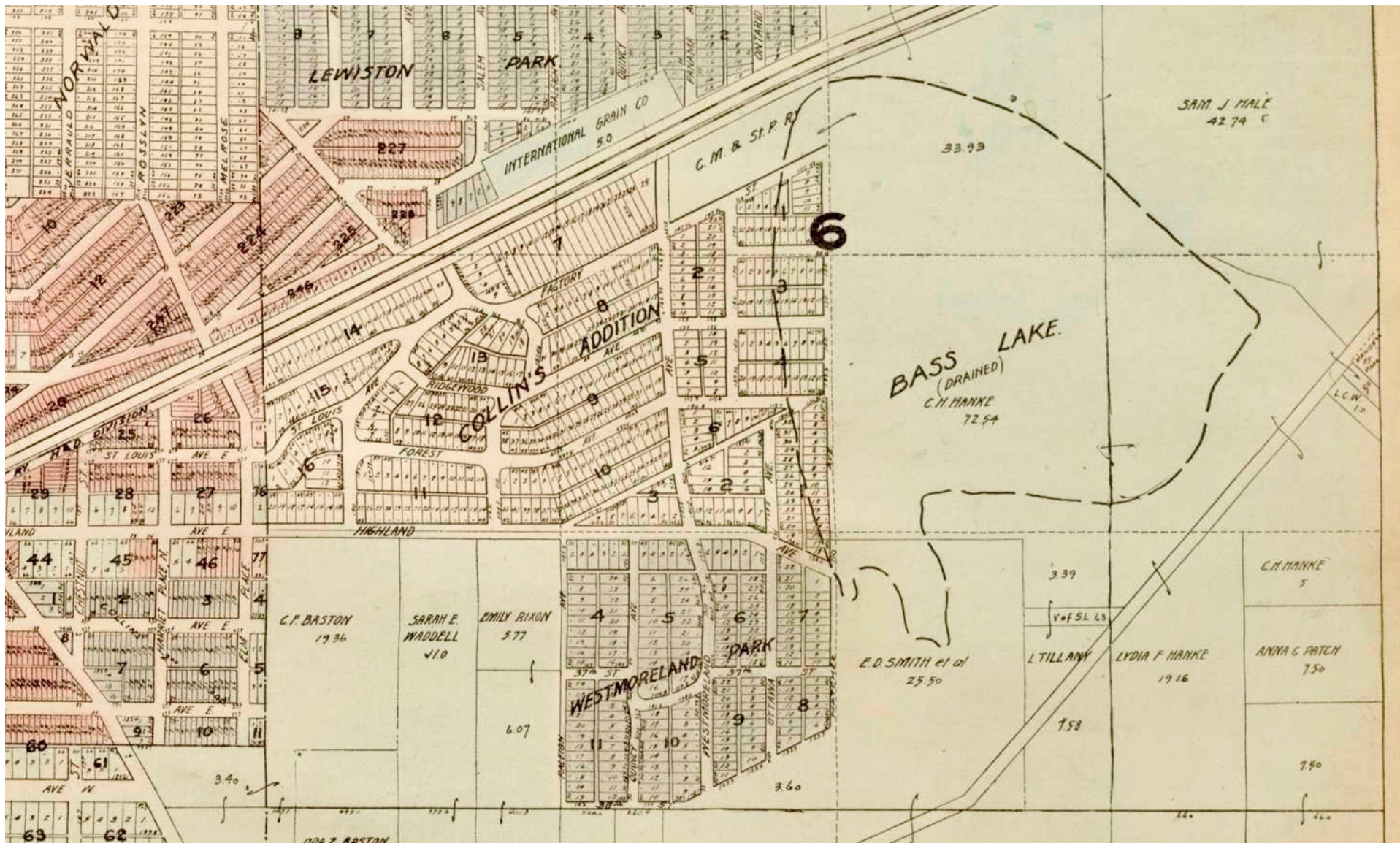


AN 1874 PLAT MAP (LEFT) SHOWS THE MINNEAPOLIS & ST. LOUIS RAILROAD BISECTING WHAT STILL APPEARS TO BE A SWAMP; AN 1886 PLAT MAP (RIGHT), THE YEAR THE PARK BECAME A VILLAGE, SHOWS THE ADDED HASTINGS & DAKOTA (MILWAUKEE ROAD) RAIL LINE ADJACENT TO THE M&SL, AND SHOWS BASS LAKE AS A LAKE FOR THE FIRST TIME.

“HISTORY OF HENNEPIN COUNTY” BY REV. EDWARD D. NEILL, 1881, SAYS THE LAKE IS ABOUT 80 ACRES. “THE GEOLOGY OF MINNESOTA, 1882-1885; VOL II OF THE FINAL REPORT,” BY N. H. WINCHELL, AND WARREN UPHAM SAYS THAT THE LAKE ELEVATION IS ABOUT 880.0 BASED ON RAILROAD DATA. LAKE CALHOUN ELEVATION IS ABOUT 837.0.







IN 1907, CHARLES H. HANKE AND OTHERS PETITIONED HENNEPIN COUNTY TO DRAIN BASS LAKE; IN 1908, THE COUNTY CONSTRUCTED COUNTY DITCH #14 WHICH LOWERED THE NATURAL OUTLET INTO THE CREEK CROSSING EXCELSIOR BLVD AND THE LAKE ELEVATION BY ABOUT EIGHT FEET, PRESUMABLY TO CREATE ABOUT 50 ACRES MORE HANKE FARMLAND, (ATLAS MAP FROM 1913, UM BORCHERT MAP LIBRARY).



[illegible]

IN 1907, THE MINIKAHDA GOLF CLUB ADDED NINE HOLES, INCLUDING LAND EAST OF FRANCE AVENUE PURCHASED FROM CHRISTOPHER HANKE, WHICH INCLUDED THE CREEK OUTLET FROM BASS LAKE TO LAKE CALHOUN. IN 1916, CHICK EVANS WON THE U.S. OPEN THERE.



Big Steam Shovel Moves on Sidetracks of Protesting Industries,  
Defeated in Their Fight to Halt Milwaukee Rail Depression



The larger picture shows the huge steam shovel of the Milwaukee railroad advancing toward the plant of the Twin City Separator company in Twenty-ninth street. The Twin City company was the leader of the industries that waged a losing fight to halt the depression of the tracks in Twenty-ninth street. The Twin City company was first of these plants in the path of the shovel, which has set its mark this year at Nicollet avenue. The figure in the upper left of the picture is George A. Van Dyke, superintendent of terminals for the Milwaukee, who is in charge of the depression job.



IN 1910, MINNEAPOLIS APPROVED THE LOWERING OF THE MILWAUKEE ROAD 29<sup>TH</sup> STREET TRACKS BY 20 FEET, ELIMINATING DOZENS OF AT-GRADE STREET CROSSINGS. MINNEAPOLIS TRIBUNE 1912 PHOTO SHOWS EXCAVATION IN PROGRESS AT NICOLLET AVENUE. A FULLY DEVELOPED SWITCHYARD COVERING THE NORTHERN ONE-THIRD OF BASS LAKE/SWAMP (1945 AERIAL PHOTO) WAS CREATED FROM THE 1.5 MILLION CUBIC YARDS OF FILL EXCAVATED FROM WHAT IS NOW THE MIDTOWN GREENWAY.







*THIS 1945 AERIAL SHOWS DITCH #14 EXITING BASS LAKE/SWAMP, PASSING UNDER EXCELSIOR BLVD, AND REEMERGING IN THE MINIKAHDA CLUB GOLF COURSE. HANKE FARMSTEAD AT LOWER LEFT.*





*CHARLES HANKE AND HIS FARMHOUSE AND BARN IN THE EARLY 1900s - ON EXCELSIOR BLVD NEAR WHERE MIDAS IS TODAY;*



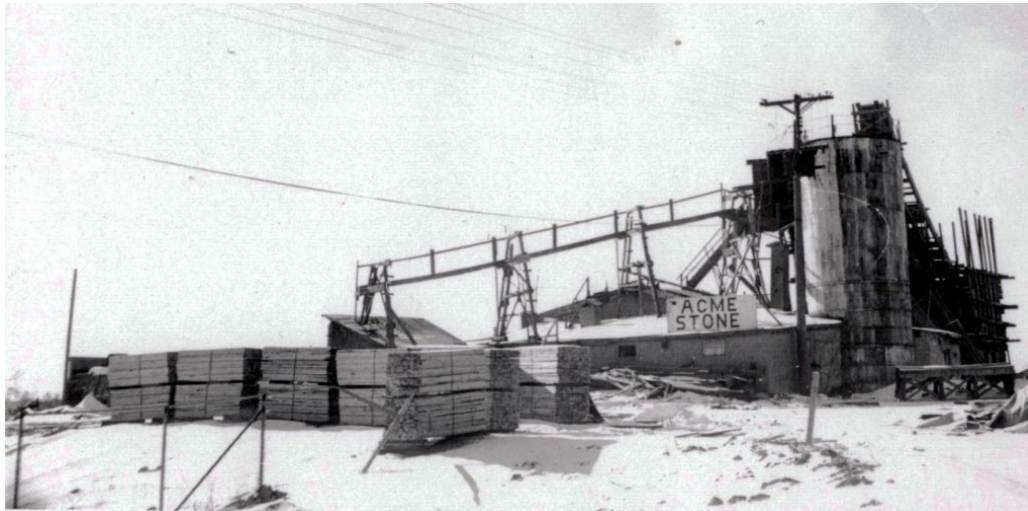
ST. LOUIS PARK HISTORICAL SOCIETY





*ACME STONE AND LUMBER MOVED SOME OF ITS OPERATIONS FROM 29<sup>TH</sup> & LYNDALE WEST ALONG THE MILWAUKEE ROAD TRACKS TO 3200 FRANCE AVENUE SOUTH; EARLIEST EVIDENCE IS THIS 1937 AERIAL PHOTO. MINIKAHDA OAKS IS HALF FULL OF HOUSES. THE "STONE" OPERATION APPEARS TO HAVE BEEN THE MANUFACTURE OF CONCRETE BLOCKS.*





*BY 1956 (LEFT), THE STONE OPERATION WAS EXPANDED TO INCLUDE A LUMBER YARD. BY 1971, (RIGHT), THE STONE OPERATION WAS GONE AND THE LUMBER YARD EXPANDED.*



## TOMORROW'S JOBS

# Cement Block Firm Turns Down Orders

By MILTON KAPLAN

Minneapolis Tribune Staff Writer

Next to not having enough business, industry's most unhappy experience is turning business away, and that's what many Minneapolis concerns are going through now.

Refusal of orders by Acme Stone Co., 2937 Lyndale avenue S., is a repetition of what happened at the start of the war. But now the amount of business being turned down is larger than ever before.

Producing cement blocks, one of the most critical building materials, Acme "can't take anything for six to eight weeks," and is daily refusing new customers, according to Edward O. Johnson, secretary-treasurer.

The shortage has developed, Johnson explained, because many of the block making companies were shut down during the war or recently have been undermanned, and there was no stockpile to care for the first rush of orders.

In normal years, the industry lags a little during the winter. But it's not likely to do so this year, Johnson said.

The company now employs 16

men and expects to add a second shift soon for the first time since before the war, and at a time when there usually is some employment drop.

Before the war Acme shipped some blocks to nearby localities, but is shipping none outside the city now, Johnson said.

Johnson said he was confident the industry would be able to accumulate a stockpile over the winter to care for the boom in building expected to get underway early next year.

### That Light Touch!

A discharged veteran en route home received a "touching" farewell from one of two women he met in a loop bar, he reported to police Wednesday. Sandy Breeding, Big Timber, Mont., said the woman embraced him and told him to wait for her. While waiting he discovered his billfold containing \$95 was missing.

By E. S. Campbell



The E. S. Warner Bros. Entertainment Inc. 9/10

## MEN WANTED

Make concrete blocks, \$1 per hour. Apply  
32nd & France av S. Acme Stone Co.

IN 1945, ACME WAS OPERATING AT BOTH MINNEAPOLIS AND ST. LOUIS PARK SITES, AND COULDN'T KEEP PACE WITH THE POST-WAR BUILDING BOOM. (CLIPPINGS FROM THE MINNEAPOLIS TRIBUNE, 1945.)



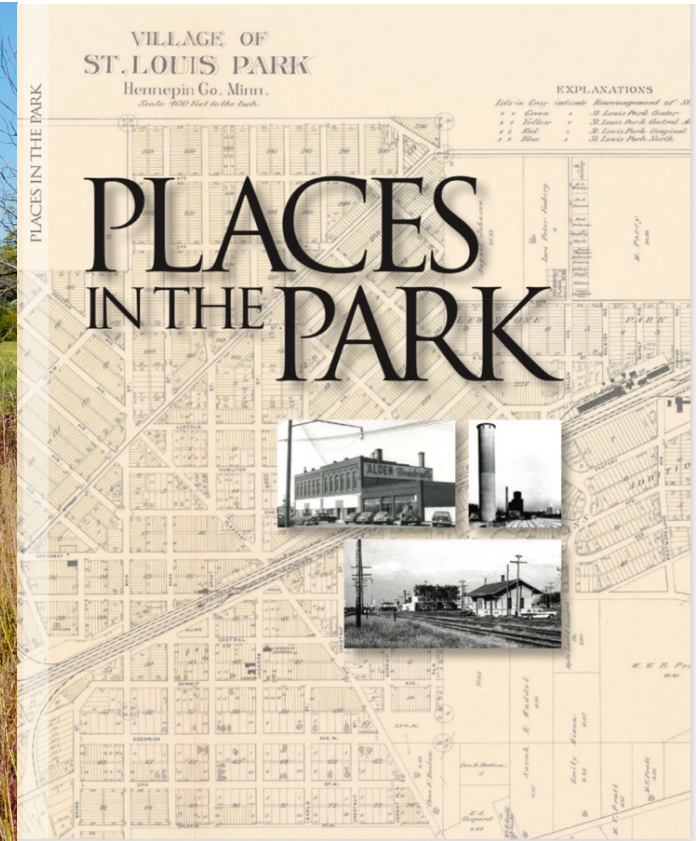


FROM THE TIME IT WAS DRAINED IN 1908, THE LAKE/SWAMP WAS USED AS A DUMPING GROUND, BOTH LEGAL AND ILLEGAL. A LOT OF CONCRETE AND OTHER BUILDING DEBRIS (“CLEAN FILL”) POPS UP OUT OF THE MUCK EACH YEAR. THE CHUNK OF CONCRETE (CENTER) WEIGHS AROUND THREE TONS. A TREE HAS GROWN TO EMBRACE A SECTION OF DISCARDED SIDEWALK.

THE FRIENDS OF BASS LAKE NON-PROFIT WAS FOUNDED IN 2008, AS A LAKE ASSOCIATION SUPPORTED BY THE MINNEHAHA CREEK WATERSHED DISTRICT, TO PROMOTE PRESERVATION OF THE RESOURCE. IT HAS DONE HEROIC VOLUNTEER WORK TO CLEAN UP THE WORST OF THE DUMP DEBRIS AND REMOVE BUCKTHORN AND OTHER INVASIVES. THE MAP ABOVE FROM THEIR WEBSITE IMAGINES THE HISTORIC EXTENT OF OPEN WATER, WHICH MIGHT HAVE REACHED NORTH TO THE BACK DOOR OF CITY HALL.







VIEW OF BASS LAKE FROM BELTLINE DRIVE, LOOKING EAST, 2019.

BOOKS AVAILABLE BY MAIL ORDER AT OUR WEBSITE FOR \$20.00 PLUS POSTAGE AND HANDLING

[www.slphistory.org](http://www.slphistory.org)  
<https://www.friendsofbasslake.com/>

BOOKS MAY ALSO BE PURCHASED AT ST. LOUIS PARK CITY HALL AND THE REC CENTER FOR \$20.00

*"FINALLY, THIS PLACE-FOCUSED HISTORY IS DESIGNED TO MERELY TOUCH THE SURFACE, TO PIQUE YOUR OWN INTEREST IN FINDING, TELLING, AND PRESERVING OUR CITY'S YET UNTOLD STORIES."*